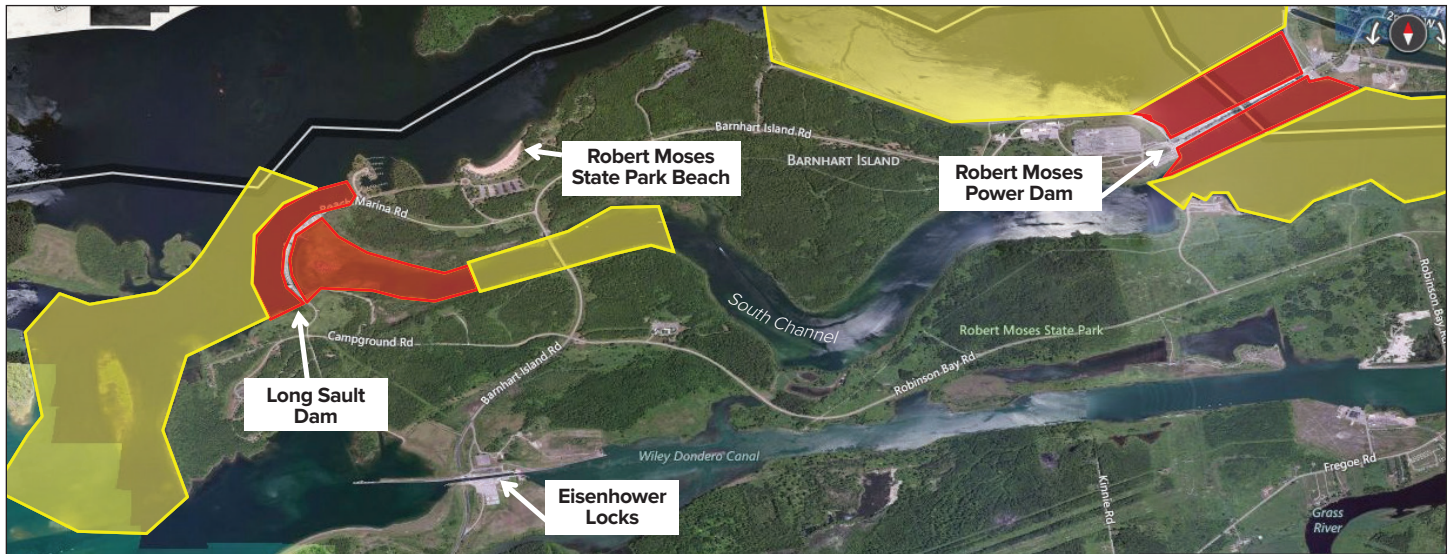




NY Power
Authority

Safety Information

About Summer/Fall Conditions In/Around St. Lawrence-Franklin D. Roosevelt Power Project



No Swimming or Boating
Stay Out – 800 Feet Security Zone

Dangerous Currents, No Swimming

With water being released from Long Sault Dam to manage flow, the New York Power Authority wants to make you aware of potentially dangerous changes in water conditions.

Rapidly changing water flows near Long Sault Dam and the South Channel of the St. Lawrence River may create dangerous currents.

Signs are placed at various locations around Robert Moses State Park.

When water is released from the Long Sault Dam:

1. Listen for sirens announcing spilling is occurring or changes in spill flow amounts.
2. Keep back a minimum of 800 feet from the Long Sault Dam spillway and Robert Moses Power Dam, on both the upstream and downstream sides.
3. Always use caution on the river and on riverbanks. Strong currents are not easily seen.
4. Be aware of changing river conditions and strong currents, specifically in yellow and red areas. Swimming is prohibited in these areas.

For more information on water flows
visit: http://ijc.org/en_/islrbc



For more information on marine conditions,
visit the Great Lakes St. Lawrence Seaway
System website:

<http://www.greatlakes-seaway.com/en/>

